

CONTRA-ROSCA HEXAGONAL REDUCIDA MACHO-HEMBRA

MATERIAL

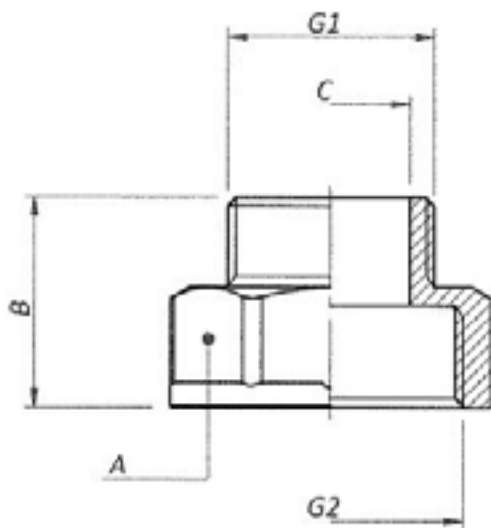
UNE-EN 12165 CW617N (1)

UNE-EN 12164 CW614N (2)

UNE-EN 1982 CB753S (3)

ROSCA

ISO 228



| Código | Dimensiones | G1 | G2 | A | B | ØC | Material |
|---------|---------------------|---------|---------|------------|------|------|----------|
| AA25081 | 1/8 M x 1/4" H | G 1/8 | G 1/4 | Exag. 15 | 18 | 5 | 1 |
| AA25080 | 1/8 M x 3/8" H | G 1/8 | G 3/8 | Exag. 19 | 20 | 5 | 1 |
| AA25082 | 1/4" M x 3/8" H | G 1/4 | G 3/8 | Exag. 19 | 21 | 8 | 3 |
| AA25083 | 3/8" M x 1/2" H | G 3/8 | G 1/2 | Exag. 24 | 22,8 | 12 | 1 |
| AA25084 | 1/2" M x 3/4" H | G 1/2 | G 3/4 | Exag. 29 | 26,3 | 15,2 | 1 |
| AA25087 | 1/2" M x 1" H | G 1/2 | G 1 | Exag. 36 | 28,5 | 15,2 | 1 |
| AA25085 | 3/4" M x 1" H | G 3/4 | G 1 | Exag. 36 | 29,5 | 20,7 | 1 |
| AA25088 | 3/4" M x 1 1/4" H | G 3/4 | G 1 1/4 | Exag. 45 | 32,5 | 20,7 | 1 |
| AA25089 | 3/4" M x 2" H | G 3/4 | G 2 | Exag. 65 | 40 | 20,7 | 1 |
| AA25090 | 1" M x 1 1/4" H | G 1 | G 1 1/4 | Exag. 45 | 33,2 | 26,5 | 1 |
| AA25091 | 1" M x 1 1/2" H | G 1 | G 1 1/2 | Exag. 52 | 35,2 | 26,5 | 1 |
| AA25092 | 1 1/4" M x 1 1/2" H | G 1 1/4 | G 1 1/2 | Exag. 52 | 34,5 | 34,5 | 1 |
| AA25093 | 1 1/2" M x 2" H | G 1 1/2 | G 2 | Exag. 64 | 37,5 | 39 | 1 |
| AA25094 | 2" M x 2 1/2" H | G 2 | G 2 1/2 | Exag. 82,5 | 41 | 49 | 2 |