

## CONTRA-ROSCA MACHO-MACHO

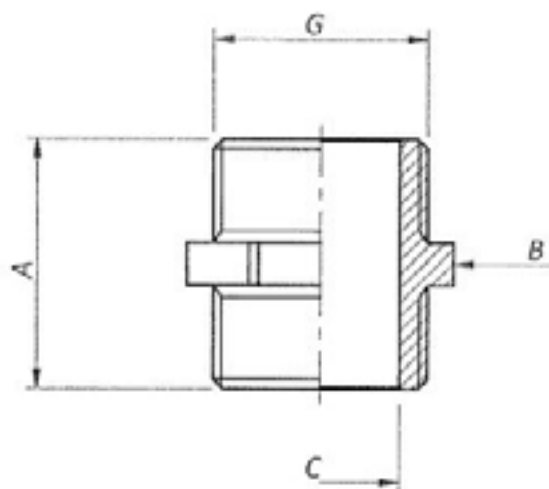
### MATERIAL

UNE-EN 12165 CW617N (1)

UNE-EN 12164 CW614N (2)

### ROSCA

ISO 228



| Código  | Dimensiones | G      | A    | B        | C    | Material |
|---------|-------------|--------|------|----------|------|----------|
| AA25000 | 1/8"        | G1/8   | 18   | Exag. 12 | 6,5  | 2        |
| AA25001 | 1/4"        | G1/4   | 19   | Exag. 14 | 8,5  | 2        |
| AA25002 | 3/8"        | G3/8   | 22   | Exag. 19 | 12   | 1        |
| AA25003 | 1/2"        | G1/2   | 25   | Exag. 23 | 15,5 | 1        |
| AA25004 | 3/4"        | G3/4   | 27,5 | Exag. 29 | 20,5 | 1        |
| AA25005 | 1"          | G1     | 34   | Exag. 36 | 26,5 | 1        |
| AA25006 | 1 1/4"      | G1 1/4 | 40,5 | Exag. 48 | 34,5 | 1        |
| AA25007 | 1 1/2"      | G1 1/2 | 44   | Exag. 54 | 40   | 1        |
| AA25008 | 2"          | G2     | 52,5 | Exag. 65 | 51   | 1        |
| AA25009 | 2 1/2"      | G2 1/2 | 60,5 | Exag. 80 | 66   | 1        |
| AA25010 | 3"          | G3     | 63,5 | Exag. 94 | 76,5 | 1        |
| AA25057 | 1/2"        | G1/2   | 31   | Exag. 24 | 15,5 | 1        |