

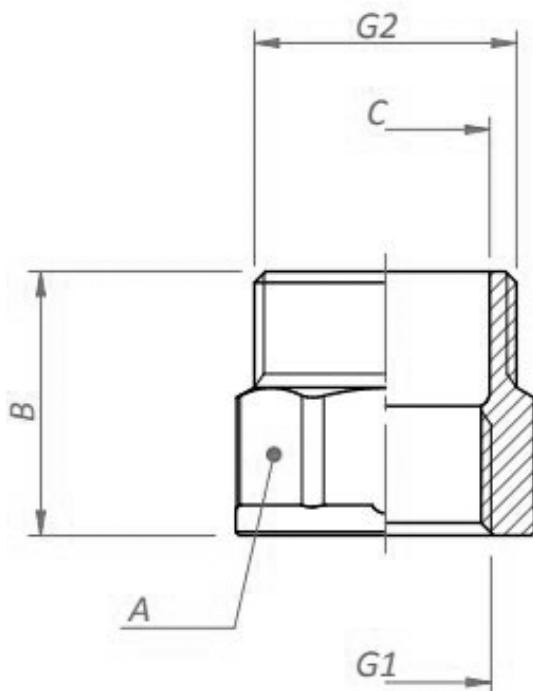
CONTRARROSCA HEXAGONAL REDUCIDA HEMBRA-MACHO

MATERIAL

UNE-EN 12165 CW617N

ROSCA

ISO 228



Código	Dimensiones	G1	G2	A	B	C
AA25071	1/8" H 1/4" M	G1/8	G1/4	Exag.16	18	Ø8,7
AA25086	1/4" H x 3/8" M	G1/4	G3/8	Exag.17	19	Ø11,5
AA25072	3/8" H x 1/2" M	G3/8	G1/2	Exag.20,7	23,5	Ø15,5
AA25073	1/2" H x 3/4" M	G1/2	G3/4	Exag.26,2	26,2	Ø20,7
AA25078	1/2" H x 1" M	G1/2	G1	Exag.27,8	27,8	Ø25,7
AA25074	3/4" H x 1" M	G3/4	G1	Exag.29	29	Ø26,5