

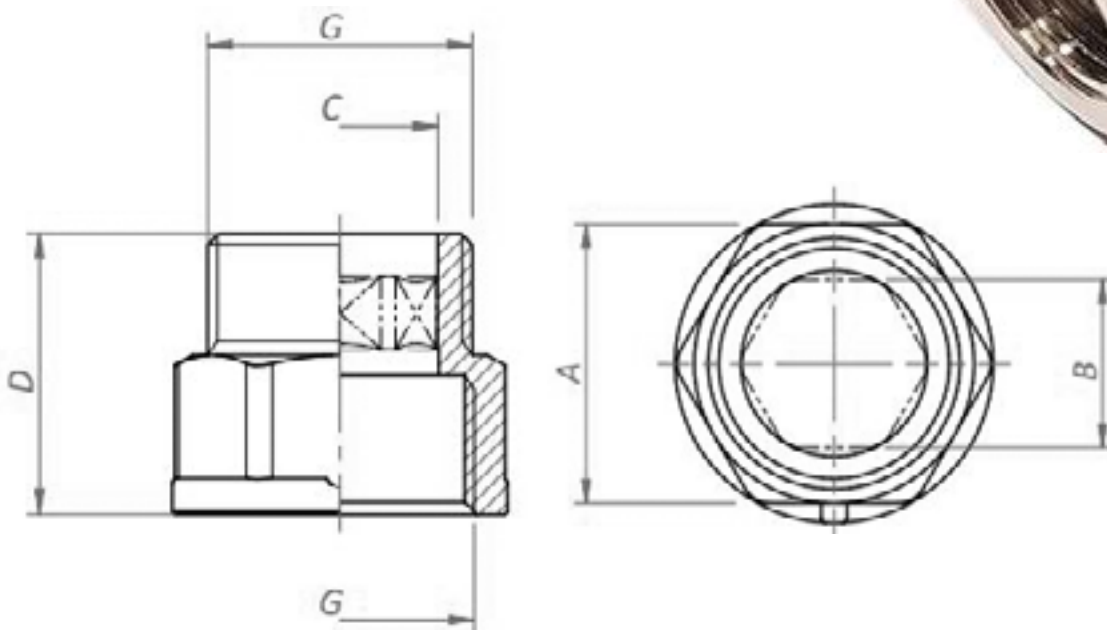
CONTRARROSCA HEXAGONAL MACHO-HEMBRA CROMADA

MATERIAL

UNE-EN 12165 CW617N

ROSCA

ISO 228



Código	Dimensiones	G	A	B	ØC	D
AA25069	3/8"	G3/8	Exag. 20	-	12	22
AA25070	1/2"	G1/2	Exag. 24	Biexag. 13 (1/2")	15,5	24,5