

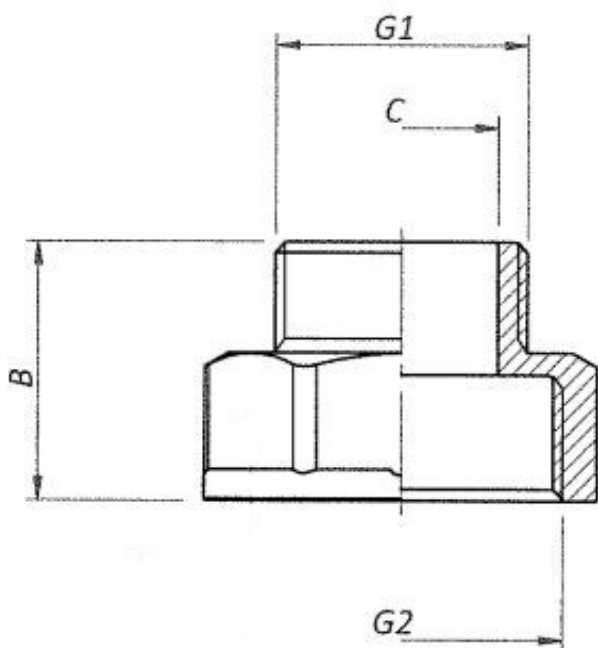
CONTRARROSCA HEXAGONAL REDUCIDA MACHO-HEMBRA CROMADA

MATERIAL

UNE-EN 12165 CW617N

ROSCA

ISO 228



Código	Dimensiones	G1	G2	B	ØC
AA25095	3/8" M x 1/2" H	G3/8	G1/2	22,8	12
AA25096	1/2" M x 3/4" H	G1/2	G3/4	26,3	15,2