

CONTRARROSCA REDUCIDA MACHO-MACHO

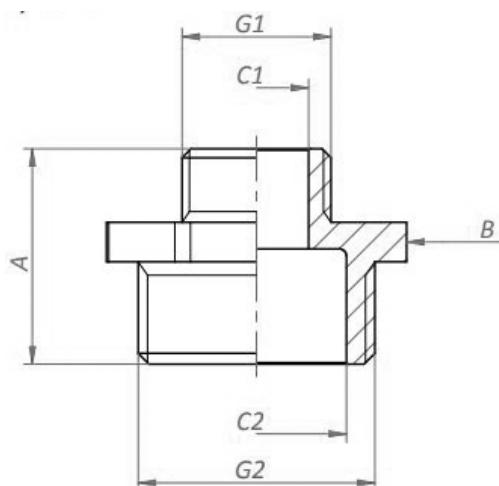
MATERIAL

UNE-EN 12165 CW617N (1)

UNE-EN 12164 CW614N (2)

ROSCA

ISO 228



Código	Dimensiones	G1	G2	A	B	C1	C2	Material
AA25020	1/8" x 1/4"	G1/8	G1/4	18	Exag.15	6,5	9	2
AA25018	1/8" x 3/8"	G1/8	G3/8	20	Exag.18	6,5	11	2
AA25011	1/4" x 3/8"	G1/4	G3/8	21	Exag.19	9	12	1
AA25036	1/4" x 1/2"	G1/4	G1/2	24	Exag.22	9	15,5	1
AA25012	3/8" x 1/2"	G3/8	G1/2	23	Exag.23	12	15,5	1
AA25013	1/2" x 3/4"	G1/2	G3/4	26,5	Exag.28	15,5	20,3	1
AA25037	1/2" x 1"	G1/2	G1	30	Exag.35,5	15,5	26,5	1
AA25038	1/2" x 1 1/4"	G1/2	G1 1/4	34	Exag.43,6	15,5	34,5	1
AA25014	3/4" x 1"	G3/4	G1	31,2	Exag.35,5	20,5	26,5	1
AA25019	3/4" x 1 1/4"	G3/4	G1 1/4	35	Exag.43,6	20,5	34,5	1
AA25098	3/4" x 1 1/2"	G3/4	G1 1/2	36,5	Exag.50	20,5	40	1
AA25015	1" x 1 1/4"	G1	G2	37,7	Exag.43,6	26,5	34,5	1
AA25039	1" x 1 1/2"	G1	G1 1/2	39,2	Exag.50	26,5	40	1
AA25075	1" x 2"	G1	G2	43,2	Exag.61	26,5	51	1
AA25016	1 1/4" x 1 1/2"	G1 1/4	G1 1/2	42	Exag.50	34,5	40	1
AA25520	1 1/4" x 2"	G1 1/4	G2	47	Exag.61	34,5	51	1
AA25017	1 1/2" x 2"	G1 1/2	G2	47,5	Exag.61	40	51	1
AA25076	2" x 2 1/2"	G2	G2 1/2	56	Exag.80	51	66	1
AA25077	2" x 3"	G2	G3	58,5	Exag.94	50,5	76,5	1